



Short Time & Low Temperature
After Soaping of Reactive Dyeings and Prints
All Load & Unload Included in 1 hour...

EXOLINE MAGIC M

Prompt Wash - Off at Low Temperature

EXOLINE MAGIC M

Due to escalating impact of energy, labor and environmental costs, EKSOY Launching, WEL Series (water and energy less) chemicals, to reach reasonable cost saving with sustainable fastness properties

- COMBIBLEACH (Bleaching and disperse dyeing of PES / CO blends in one bath)
- COTTOBLEACH (Bleaching, OBA full white of PES / CO, all in one bath)
- NOBLEACH (Scouring and dyeing of dark shade cotton at 60°C, in one bath)
- MEGACLEAR 4 / 11 (Reduction Clearing of PES fibers in dyeing bath)
and finally,!...
- **EXOLINE MAGIC M** (Prompt after soaping of reactive dyeing and printing at 80°C)
- **EXOLINE MAGIC M** is a surfactant free, amphoteric polymer and achieves excellent wash - off properties for reactive dyeing and printing in short cycle and at 80°C , and saves processing costs, cares the environment.
- Weak point of reactive dyeing process is that 20 - 40 % of the dyes bond loosely with the fibers which we name as hydrolysed dye.
- **EXOLINE MAGIC M** washes off all attached hydrolysed dyestuff particles,throughly at low temperature, imparting superior wash, water fastness properties.
- **EXOLINE MAGIC M** achieves excellent fastnesses with 4 - 5 bath, even in case of dark turquoise or black dyeing !..

In case of Black or Turquoise shades, 3 - 4 hot wash-off cycles are saved.

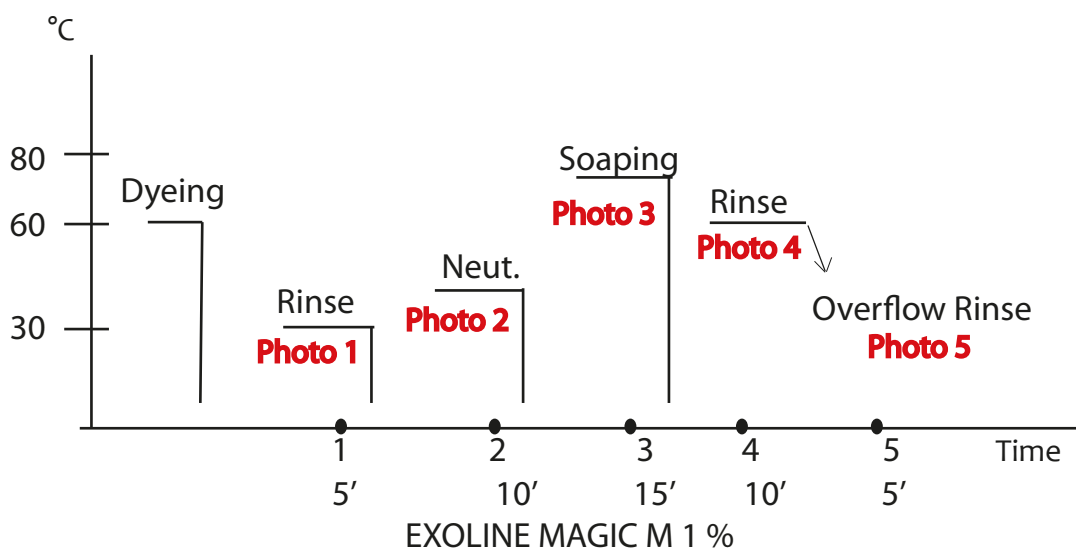
According to our practical experience, to heat up 1000 kg water by 10 °C, consumed energy is;

NPG = 2 m³, COAL = 6 kg, Fuel - oil = 1,0 kg

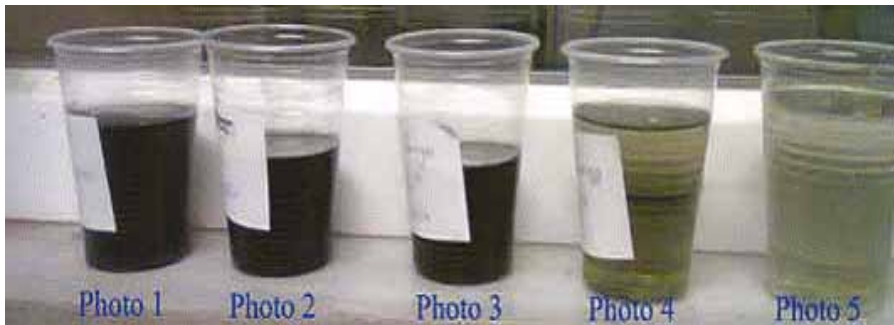
EXOLINE MAGIC M enables the dyer to SAVE, 4 hot wash cycles in case of dark shades wash - off. He will save;

NPG 400 m³ / 1000 kg fabric
 COAL 1000 kg / 1000 kg fabric
 Fuel - oil 350 kg / 1000 kg fabric

Besides Fuel - oil, Electric, Labor & Time is saved and environment SAVED !



EXOLINE MAGIC M pushes the hydrolyzed dyes into the liquor. Therefore photo 3 is even darker than photo 1 - 2. At the end of soaping don't be bothered from the color of the water. Water seems dark as **EXOLINE MAGIC M** has pushed all the hydrolyzed dyestuff to the liquor. But as it is seen, photo 4 - 5 is clean.



Fastness Results;

